

Project 1

Created on
2021-08-15

Location
Kortrijksesteenweg 28 bus 501 Harelbeke

Total area 50.83 m ²	Floors 1	Rooms 3	Bathroom 1
---	--------------------	-------------------	----------------------

Project 1

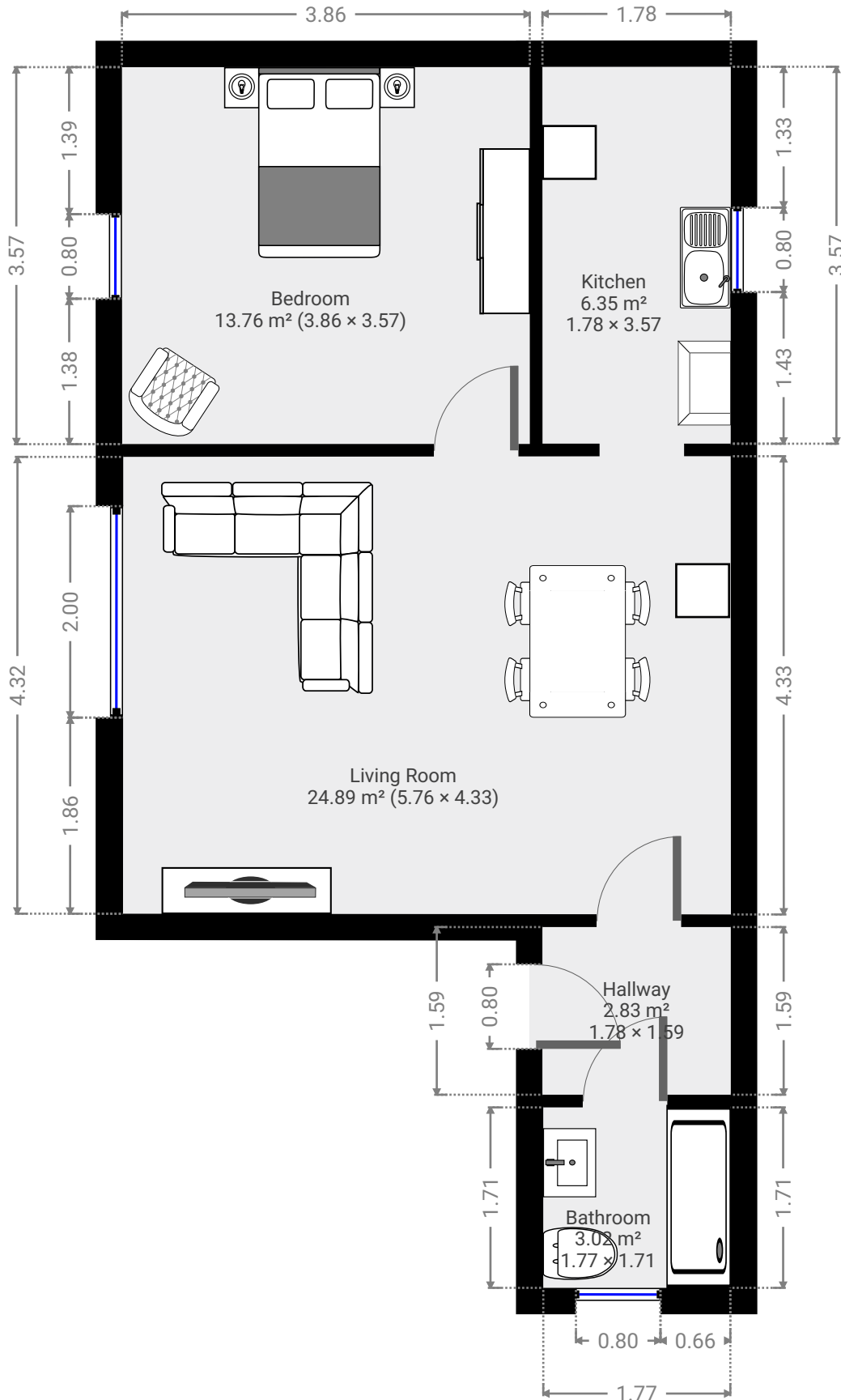
Kortrijksesteenweg 28 bus 501 Harelbeke

TOTAL AREA: 50.83 m² · LIVING AREA: 50.83 m² · FLOORS: 1 · ROOMS: 3

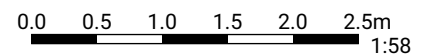


▼ Ground Floor

TOTAL AREA: 50.83 m² · LIVING AREA: 50.83 m² · ROOMS: 3



DEZE PLATTEGROND WORDT GELEVERD ZONDER ENIGE GARANTIE VAN WELKE SOORT DAN OOK.
SENSOPIA WIJST ELKE GARANTIE AF, INCLUSIEF BEVREDIGENDE KWALITEIT OF NAUWKEURIGHEID VAN DE
AFMETINGEN



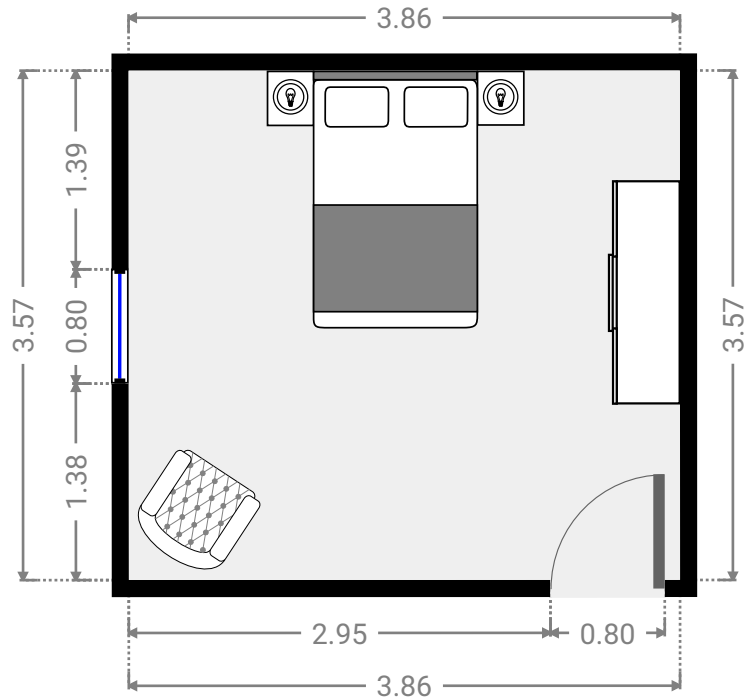
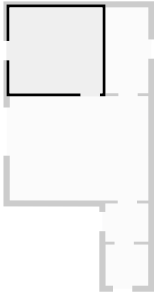
Project 1

Kortrijksesteenweg 28 bus 501 Harelbeke

TOTAL AREA: 50.83 m² • LIVING AREA: 50.83 m² • FLOORS: 1 • ROOMS: 3

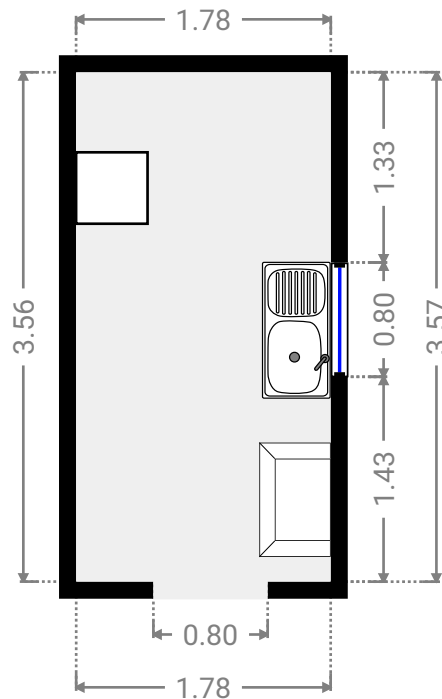
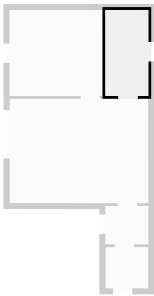
▼ Bedroom Ground Floor

WIDTH: 3.86 m • LENGTH: 3.57 m
AREA: 13.76 m² • PERIMETER: 14.85 m



▼ Kitchen Ground Floor

WIDTH: 1.78 m • LENGTH: 3.57 m
AREA: 6.35 m² • PERIMETER: 10.70 m



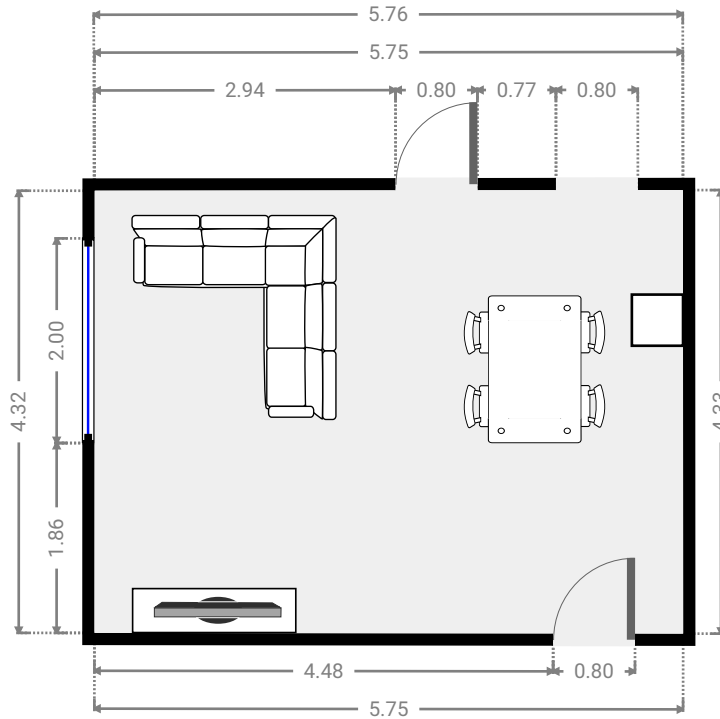
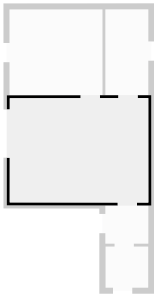
Project 1

Kortrijksesteenweg 28 bus 501 Harelbeke

TOTAL AREA: 50.83 m² • LIVING AREA: 50.83 m² • FLOORS: 1 • ROOMS: 3

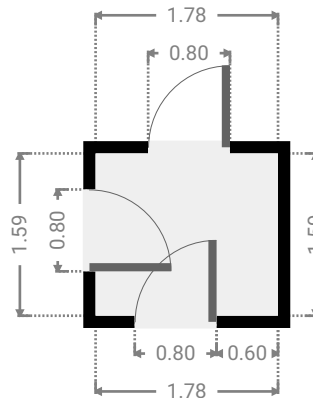
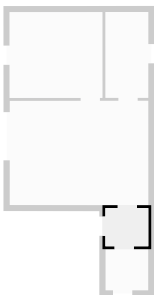
▼ Living Room Ground Floor

WIDTH: 5.76 m • LENGTH: 4.33 m
AREA: 24.89 m² • PERIMETER: 20.16 m



▼ Hallway Ground Floor

WIDTH: 1.78 m • LENGTH: 1.59 m
AREA: 2.83 m² • PERIMETER: 6.74 m



Project 1

Kortrijksesteenweg 28 bus 501 Harelbeke

TOTAL AREA: 50.83 m² • LIVING AREA: 50.83 m² • FLOORS: 1 • ROOMS: 3

▼ Bathroom Ground Floor

WIDTH: 1.77 m • LENGTH: 1.71 m
AREA: 3.02 m² • PERIMETER: 6.95 m

